

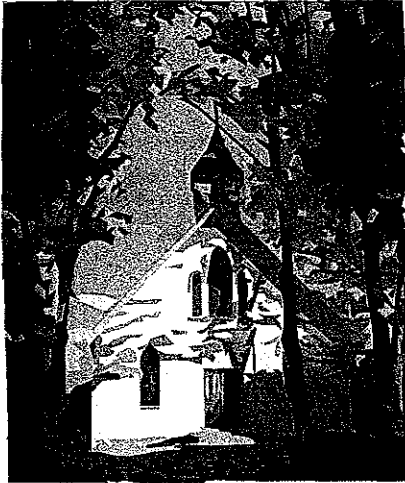


COMMUNITY JUSTICE PROGRAM purpose is to increase public safety by creating system change and changing offender behavior through mentoring.

- A. Will organization be sharing an employee?
 - 1. Yes: An MOU will need to be created with such items as funding, supervision, rights to terminate contract and other concerns.
 - 2. What is the impact of civil service/unions
- B. What is your target audience and who will define that?
 - 1. Chronic offenders generated by City and County attorneys' office
 - 2. Special program with the jail or prison: We work with a special reentry program.
 - 3. Will you take self referrals
- C. Boundaries Crossing: Sharing information across jurisdictional agencies
 - 1. Find people with positional power who can support flow of information: Probation, City and County Attorneys', non-profits, correctional facilities, Police Department.
 - 2. Release of information forms for both agencies and offenders
- D. Offender Interview:
 - 1. Who does the interviewing and when
 - 2. Questions for interview: family of origin history and support support, education, employment history which includes how long a job was held, chemical issues and if been in treatment how many times and how many completed, mental health issues, criminal history, gang involvement, their current family including children and current involvement; what they need to work on and what are they most proud of, future what happens when release and any preference for a mentor in regards to race or other concerns.

E. Mentor Matching/Tracking

1. Who will do the matching?
2. Who will do the tracking
3. Who will provide information to the various stakeholders?



F. RECRUITING MENTORS

1. Where will you recruit mentors from? The faith community, on line mentoring organizations, other sources.
2. What means of recruiting will you use? Meetings with various stake holders such as adult forums at churches or other faith groups? Preaching? Criminal Justice groups at Universities and Community Colleges?

G. BACKGROUND CHECKS: Who will do that?

H. TRAINING/ONGOING SUPPORT SUPERVISION:

1. Who will do the training and how many hours will be it?
2. Who will do the mentor matching?
3. Who will provide on going mentor support and information gathering?
4. Who will link mentors to the PO officers
5. Will you do a volunteer appreciation

For actual documents or more information please contact either Hillary Freeman at 612-673-2892 or email at hfreeman@gmcc.org or Brian Herron at 612-721-8687 or email at bherron@gmcc.org.